



**JAPAN DESIGN
LIGHTING & INTERIOR Vol.4**

 HIYOSHIYA | INTERIOR

 HIYOSHIYA | INTERIOR
JAPAN DESIGN LIGHTING & INTERIOR Vol.4



Contents

About	04
Workflow	06
Production areas	08
—	
Lighting	10
KOTORI collection	12
WAGASA collection	16
Bespoke Lamps	18
—	
Furniture & Artwork	30
—	
Materials & Techniques	
Bamboo	52
Ceramic	64
Fabric	76
Gilding	84
Washi paper	90
Wood	98
Metalwork	106
Tatami	112
Urushi lacquer	118
—	
CONTACT	



About

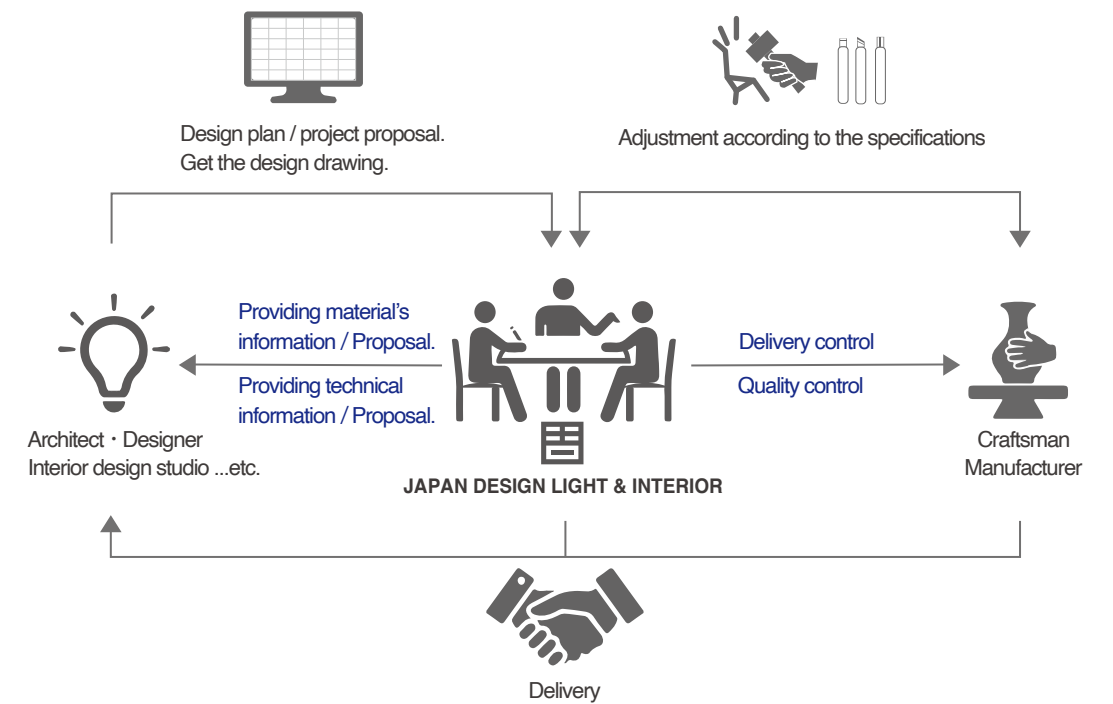
Since 2000's we launched a series of pending lights collection named KOTORI using the same materials and techniques used for the traditional umbrellas. Besides our standard collections, we offers exclusive bespoke lighting solutions, we design and produce.

Thanks to a strong network of craftsmen throughout Japan, we are able to manage product development, source specific material and techniques to meet the requirements of architects, and interior designers from Japan and abroad.

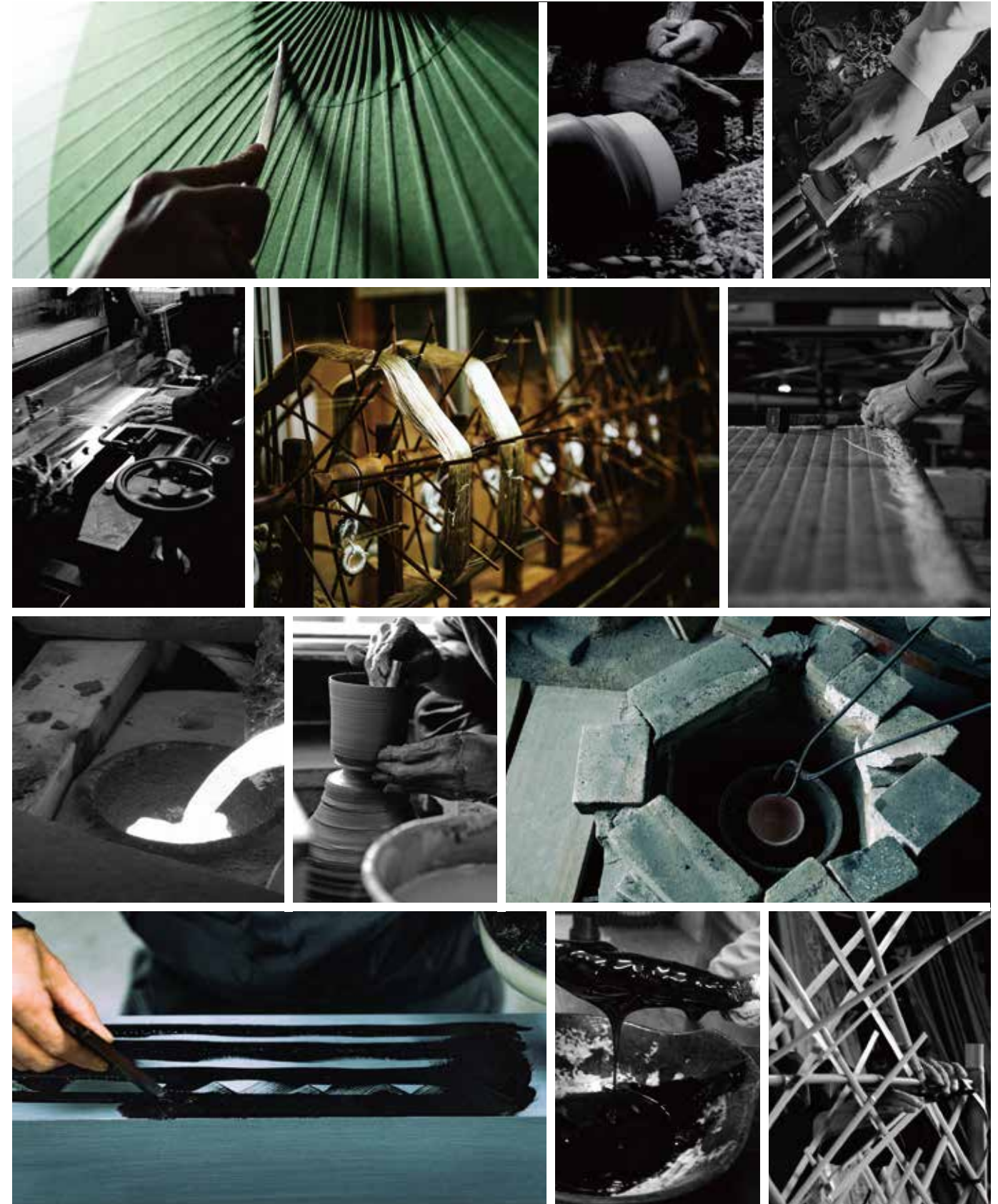
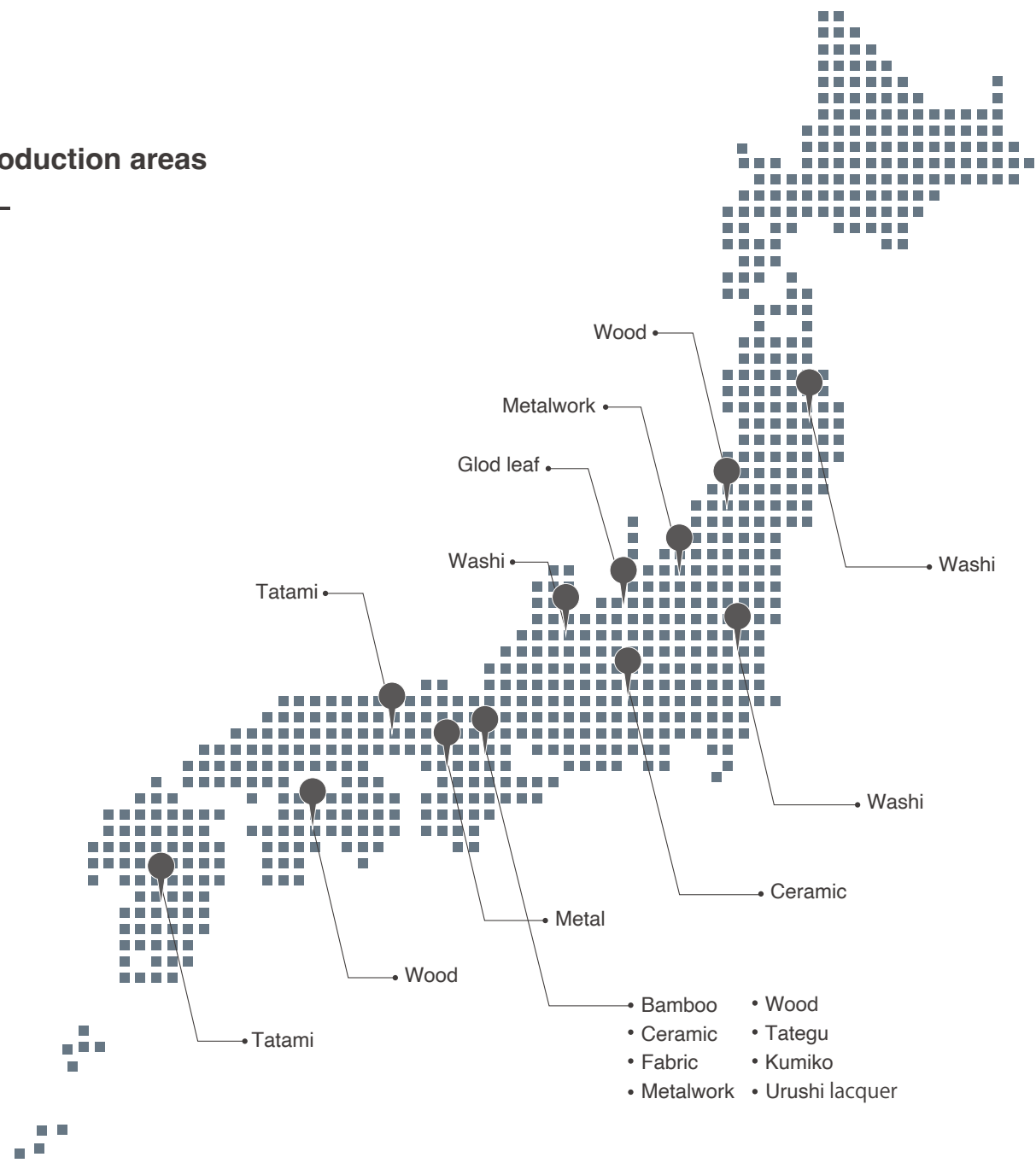
Our aim is to spread the beauty and authenticity of Japanese craftsmanship through continuing innovation over the years.



Workflow



Production areas





Lighting

KOTORI collection

WAGASA collection

Bespoke Lamps



The KOTORI HG Stand-alone floor light is made on the same craftsmanship as of Kyoto-style wagasa, the Japanese traditional umbrellas. The lighting is characterized by a delicate bamboo-made structure, and a soft and subtle light coming through the washi paper lampshade. It reminds when the sunlight shines through an opened wagasa umbrella, and reveals the details and contrast of the bamboo and the washi paper. The simple beauty of the lamp brings a timeless and universal beauty not only to a Japanese room, but also to a contemporary space.

Using the traditional technique of the wagasa making, the lampshade can be folded in a compact way just like a Japanese umbrella. You will enjoy the elaborate opening and closing structure and the way the lampshade just "spreads out".

KOTORI collection

Floor and table lamps

HG Floor and table lamps

Available size : $\phi 310 \times H460\text{mm}$ / $\phi 220 \times H310\text{mm}$

Length of cord

1935mm(shade size)

Light bulb is not included (E27 / 60W / 220-240V / 60W max)

Socket is exclusively for CE countries.

Colour

Natural White / Black / Red / Purple

Bespoke color on request.

Material

Lightning equipment body: Steel, etc.

Shade: traditional Japanese paper washi, bamboo, wood.

Designer: Hiroshi Nagane





KOTORI collection

Pendant lamps

HG Pendant lamps

Available: $\phi 380 \times H205\text{mm}$ / $\phi 530 \times H280\text{mm}$ / $\phi 708 \times H355\text{mm}$

Light bulb is not included (E27 / 60W / 220-240V)

Socket is exclusively for CE countries.

Colour

Natural White / Black / Red / Purple

Bespoke color on request.

Material

Lightning equipment body: Steel, etc.

Shade: traditional Japanese paper washi, bamboo, wood.

Designer: Hiroshi Nagane





WAGASA collection

WAGASA Light

WAGASA Light - Pendant downlight

Available size : $\phi 600 \times H220\text{mm}$ / $\phi 1000 \times H300\text{mm}$

WAGASA Light - Pendant uplight

Available size : $\phi 600 \times H220\text{mm}$ / $\phi 1000 \times H300\text{mm}$

Colour

Natural White / Black

Bespoke color on request.

Material

Lightning equipment body: Steel, etc.

Shade: traditional Japanese paper washi, bamboo, wood.

Designer: Garnier & Linker



WAGASA Light, made from natural materials such as bamboo, wood, and Japanese paper, is an elegant cone-shaped lighting system never seen before. The simplicity is of timeless beauty, suitable for Japanese and contemporary interiors, and will give an elegant touch to your home.



Bespoke lamps



Designer Joerg Gessner



Designer Elsa Pochat



Designer Ryosuke Yamamoto



Designer Yenhua Lu (HIYOSHIYA)



Designer Yenhua Lu (HIYOSHIYA)



Designer Yenhua Lu (HIYOSHIYA)



Designer Yenhua Lu (HIYOSHIYA)





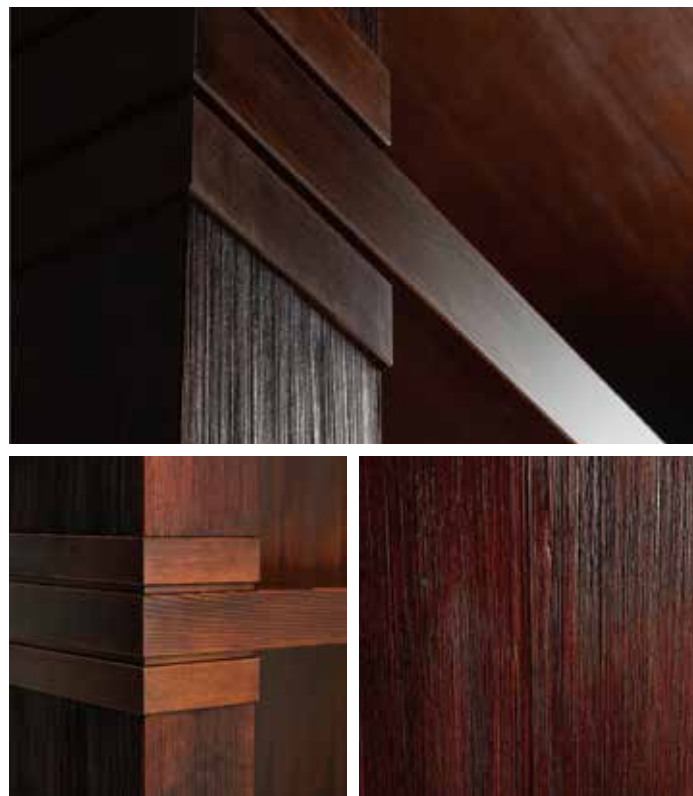


Furniture & Artwork





Bookshelves cabinet



Size: W1310xH1680xD420mm

Materials: Wood, Urushi lacquer

Designer: Garnier & Linker



Column Cabinet



Size: Φ 550xH1820mm

Materials: Wood, Urushi lacquer

Designer: Garnier & Linker



Column cabinet



Size: Φ 550xH1820mm
Materials: Cedar Wood (KITAYAMA cedar)
Designer: Garnier & Linker



Exclusive sideboard

Size: W1050xH1100mmxD470mm
Materials: Cedar Wood (KITAYAMA cedar)
Designer: Garnier & Linker



(Low cupboard)



Exclusive cupboard



(High cupboard)

Size: Low W1150xH1600mmxD470mm

Size: High W800xH1900mmxD470mm

Materials: Cedar Wood (KITAYAMA cedar)

Designer: Garnier & Linker



Exclusive commode dresser

Size: W1670xH880mmxD520mm

Materials: Cedar Wood (KITAYAMA cedar)

Designer: Garnier & Linker



Exclusive bookshelf

Size: Low W2000xH900mmxD420mm
Size: High W2000xH1800mmxD420mm
Materials: Cedar Wood (KITAYAMA cedar)
Designer: Garnier & Linker



Exclusive side table

Size: Φ 420xH610mm
Materials: Cedar Wood (KITAYAMA cedar)
Designer: Garnier & Linker





(round table)



Exclusive dining table



(long table)

Size: Round table Φ 1400xH740mm
Size: Long table W1100xH740mmxL2900mm
Materials: Cedar Wood (KITAYAMA cedar)
Designer: Garnier & Linker



Exclusive coffee table

Size: W1150xH930mmxD380mm
Materials: Cedar Wood (KITAYAMA cedar)
Designer: Garnier & Linker



Console table



Size: W1650xH950mmxD470mm

Materials: Wood,Urushi lacquer

Designer: Garnier & Linker



Sideboard



Size: W140xH35mmxD565mm

Materials: Cherry wood,

Kakishbu Washi paper (persimmon juice dye)

Designer: Garnier & Linker



Stool



Size: W500xD300x400mm
Materials: Oak solid wood,
Shibori dyed cotton cushion
Designer: Elsa Pochat



Boxes



Size:W300xH450mm
Materials: Wood,Urushi lacquer
Designer: Garnier & Linker



Table lamp



Size: Φ 186xH450mm
Materials: Pawlowina wood, washi paper
Designer: Garnier & Linker



Ceramic artwork



Size: Φ 102xH181mmm
(with metal part Φ 150mmx285mm)
Materials: Ceramic, Metal
Designer: Garnier & Linker



Vase



Size: $\Phi 130 \times H 230 \text{mm}$
Materials: Ceramic, Urushi lacquer
Designer: Garnier & Linker

Ceramic artwork



Size: (from left) $\Phi 350 \times H 125 \text{mm}$ /
 $\Phi 160 \times H 398 \text{mm}$ / $\Phi 160 \times H 295 \text{mm}$
Materials: Ceramic
Designer: Garnier & Linker



Mirror artwork



Size: Φ 186xH450mm
Materials: Wood, Mirror, Urushi lacquer
Designer: Yenhou LU



Mirror



Materials: Wood, Mirror, Urushi lacquer,
raden(mother-of-pearl work)
Designer: Pierre Charrié



Materials & Techniques

Bamboo

Bamboo is a smooth, strong and excellent natural material.

Since ancient times, it has always been a familiar material in Japanese history as a weapon such as a bow and arrow, a tool for framing and fishing, and a building material. In the early Edo period, bamboo crafts developed and spread widely from their common people to the shogun, and many advanced techniques were created. It is a versatile material that can be used for everything from delicate processing to dynamic construction, with the beauty peculiar to solid natural material.



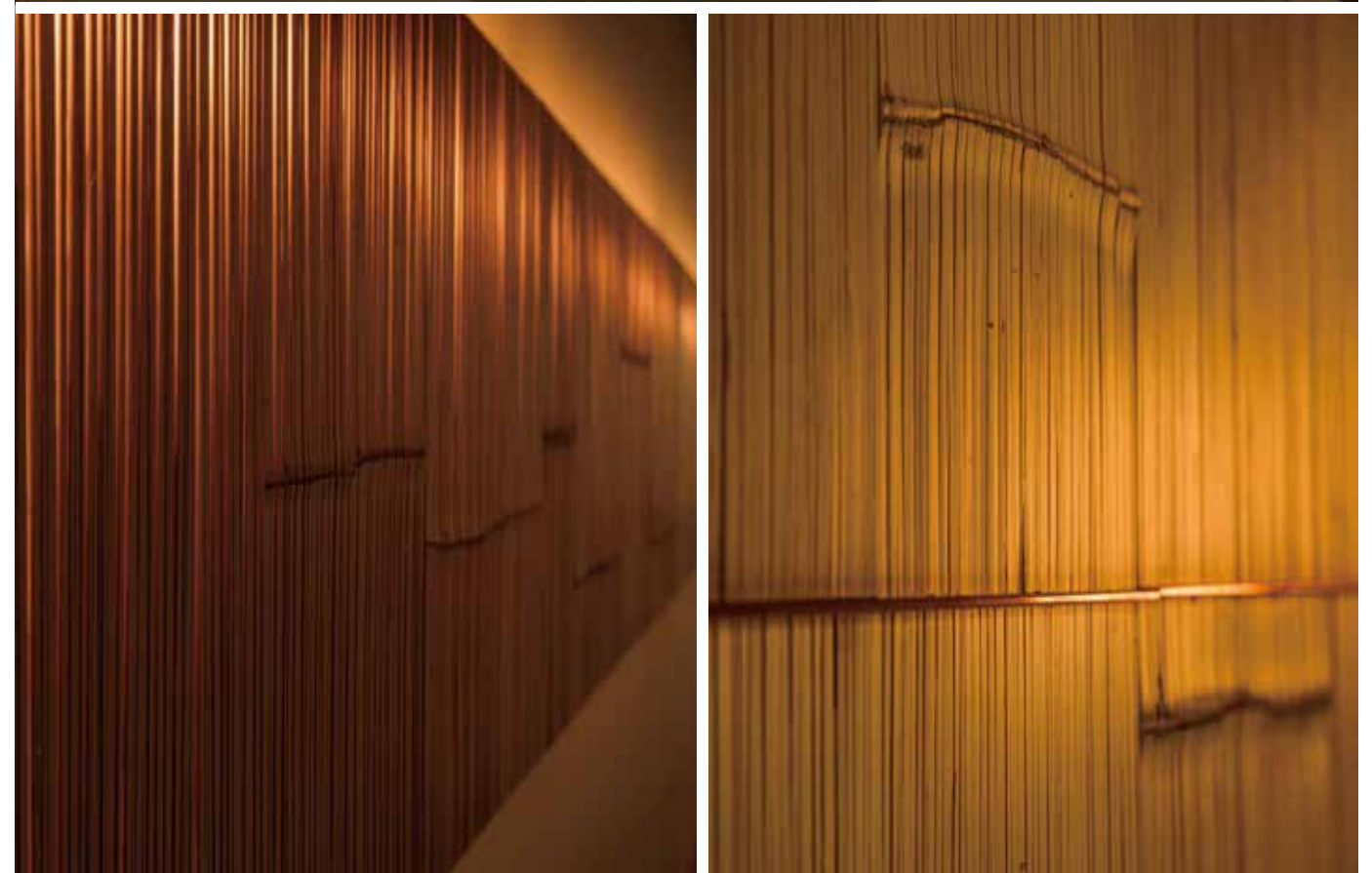
Design by Oliver Franz for the KYOTOGRAPIE International Photography Festival 2015



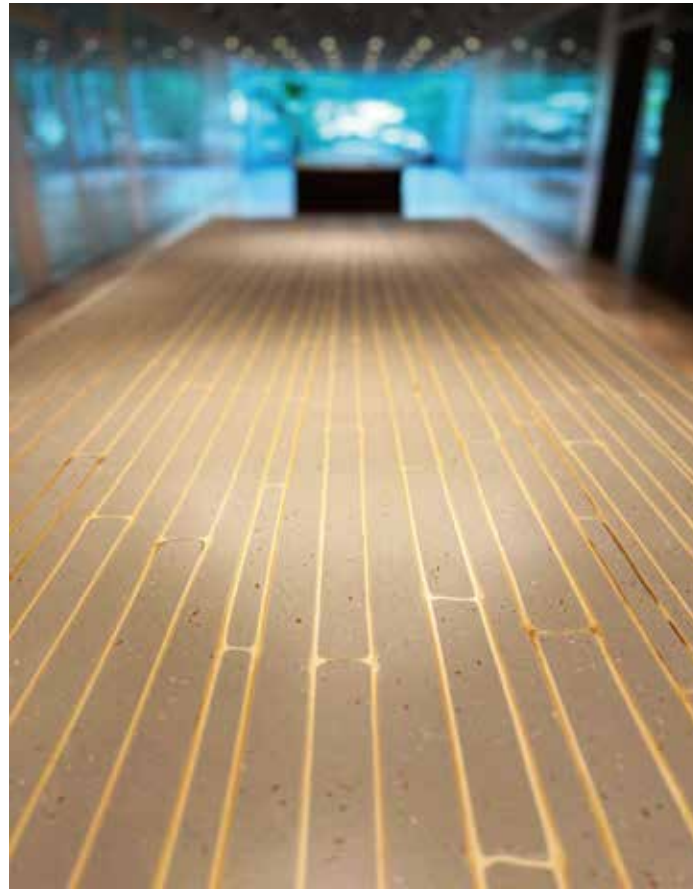
Design by Oliver Franz for the KYOTOGRAPIE International Photography Festival 2015



Design by Oliver Franz (silent.)



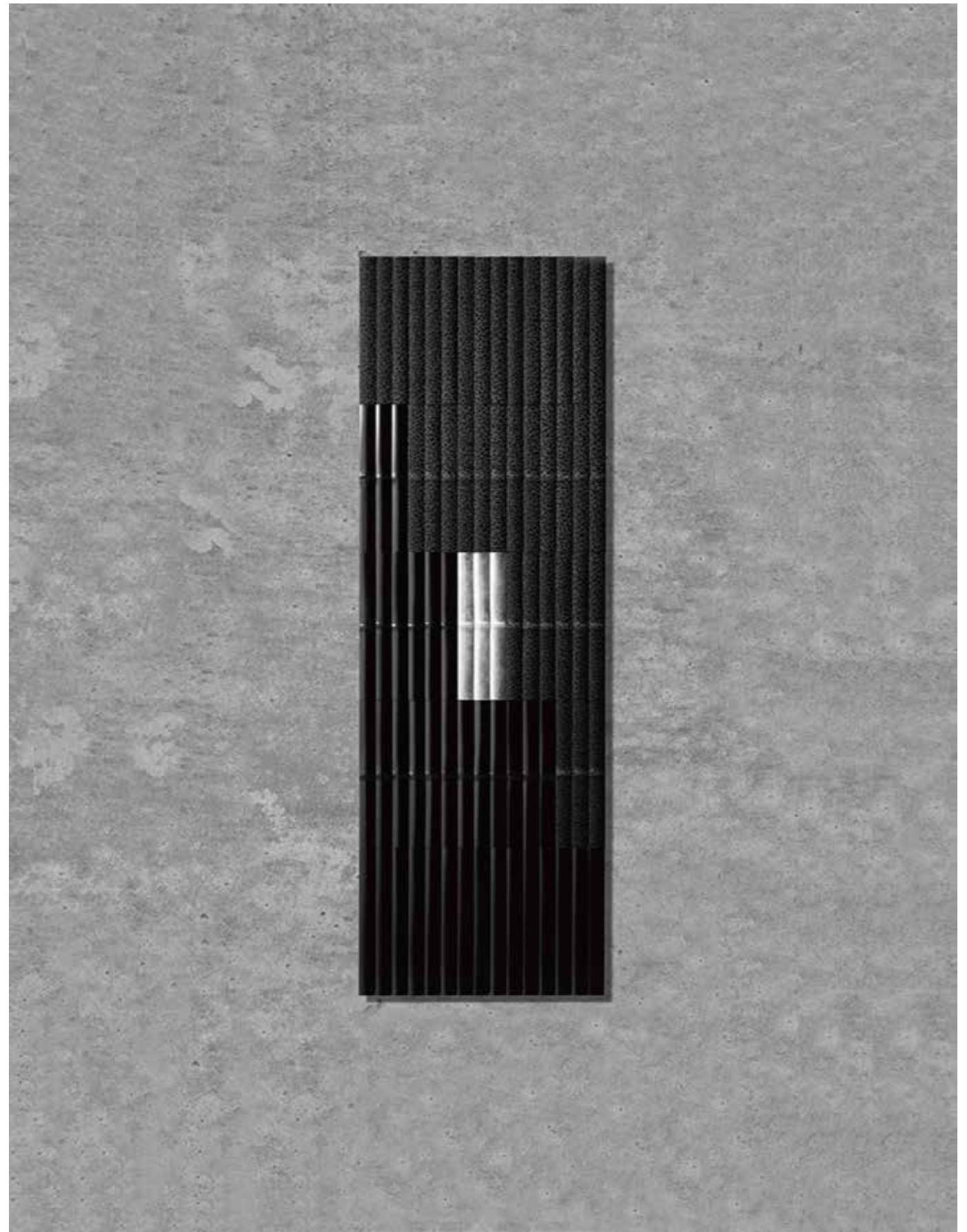
Design by Oliver Franz (silent.)



Design / Management : Nikken Sekkei Ltd.



Design by Oliver Franz (silent.)



Design by Oliver Franz (silent.)



M_TSS_011



M_TSS_016



M_TSS_018



M_TSS_019



M_TSS_026



M_TSS_027



M_NGT_001



M_TSS_020



M_TSS_021



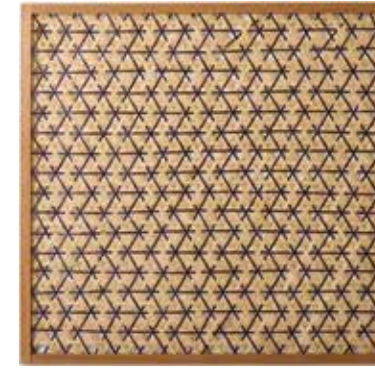
M_TSS_023



M_TSS_025



M_NGT_004



M_NGT005



M_NGT_006



M_TSS_028



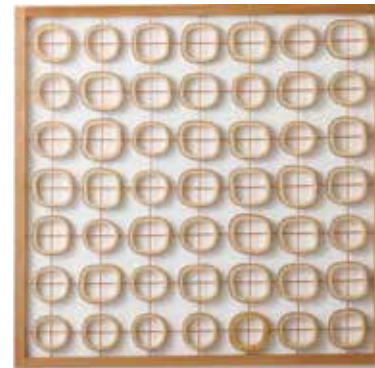
M_TSS_029



M_TSS_030



M_TSS_031



M_NGT_007



M_NGT_009



M_NGT_008



Geometric pattern panel- 01



Geometric pattern panel-02



Geometric pattern panel-03



Geometric pattern panel-04



M_NGT_010



M_NGT_011



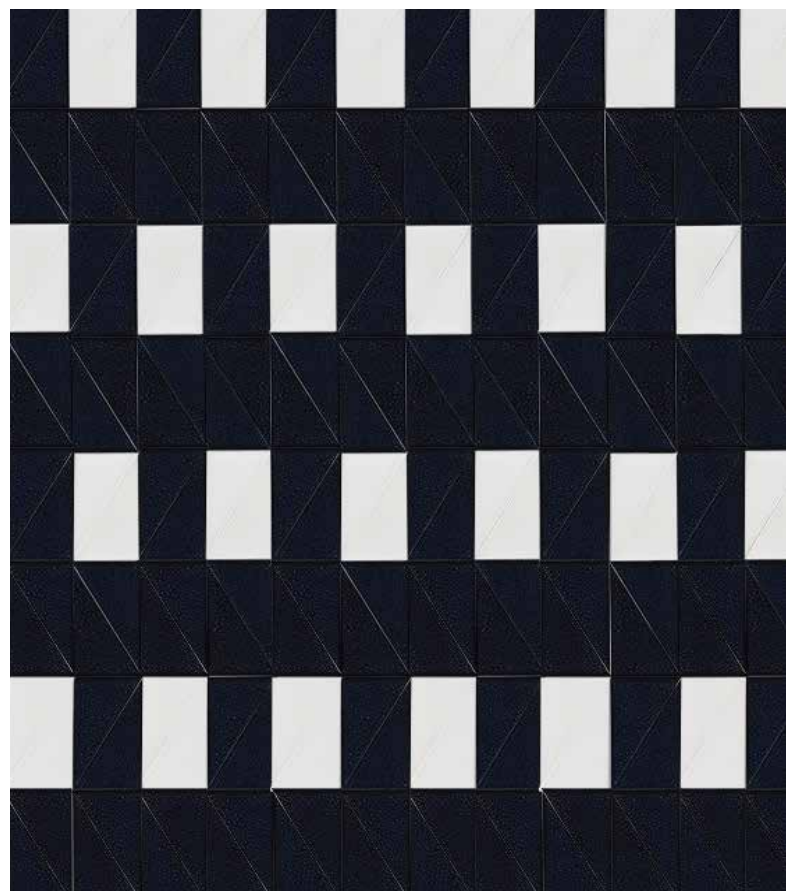
M_NGT_012

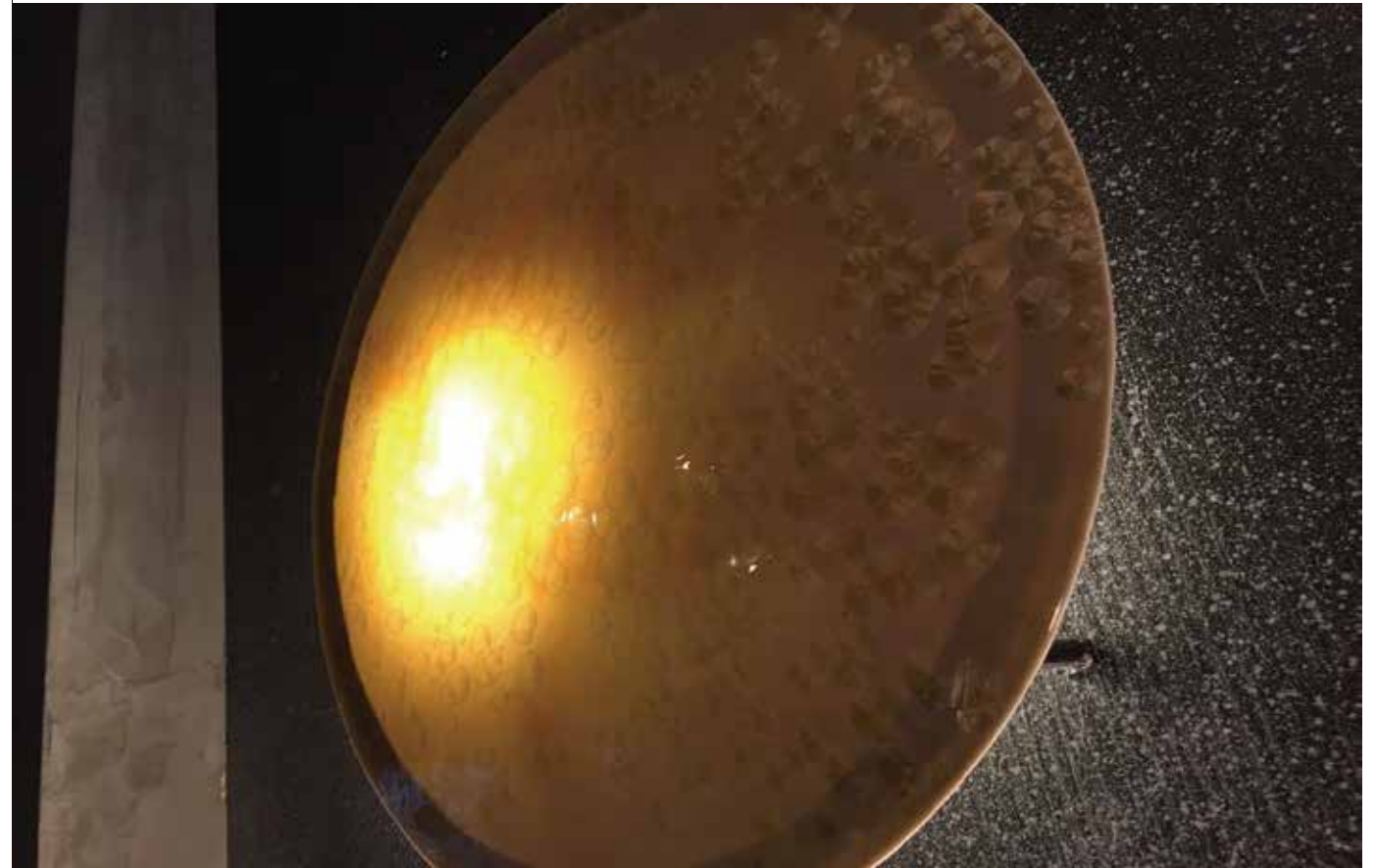


Materials & Techniques

Ceramic

Molded from pottery clay, which is then covered with glaze and fired. Metal oxides such as copper, iron and manganese are used for the glaze. The surface of the porcelain plate is vitrified by applying glaze to the dough and baking it, giving it a glossy and delicate texture. It can be used for various purposes from design tiles to lighting.









002_S120



M_RKN_002_S120_A



M_RKN_002_S120_B



M_RKN_002_S120_C



S120



M_RKN_001_S120



M_RKN_003_S120_A



M_RKN_003_S120_B



RC300



M_RKN_007_RC300



M_RKN_008_RC300_A



M_RKN_008_RC300_C



RC300_B



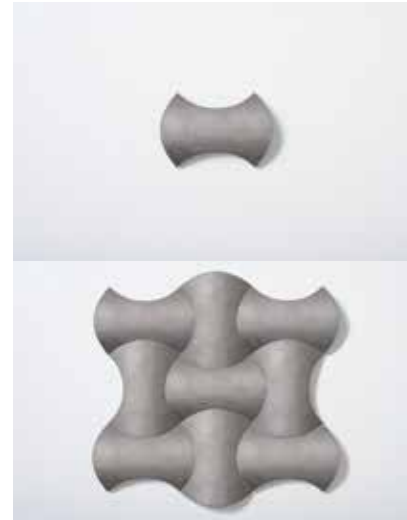
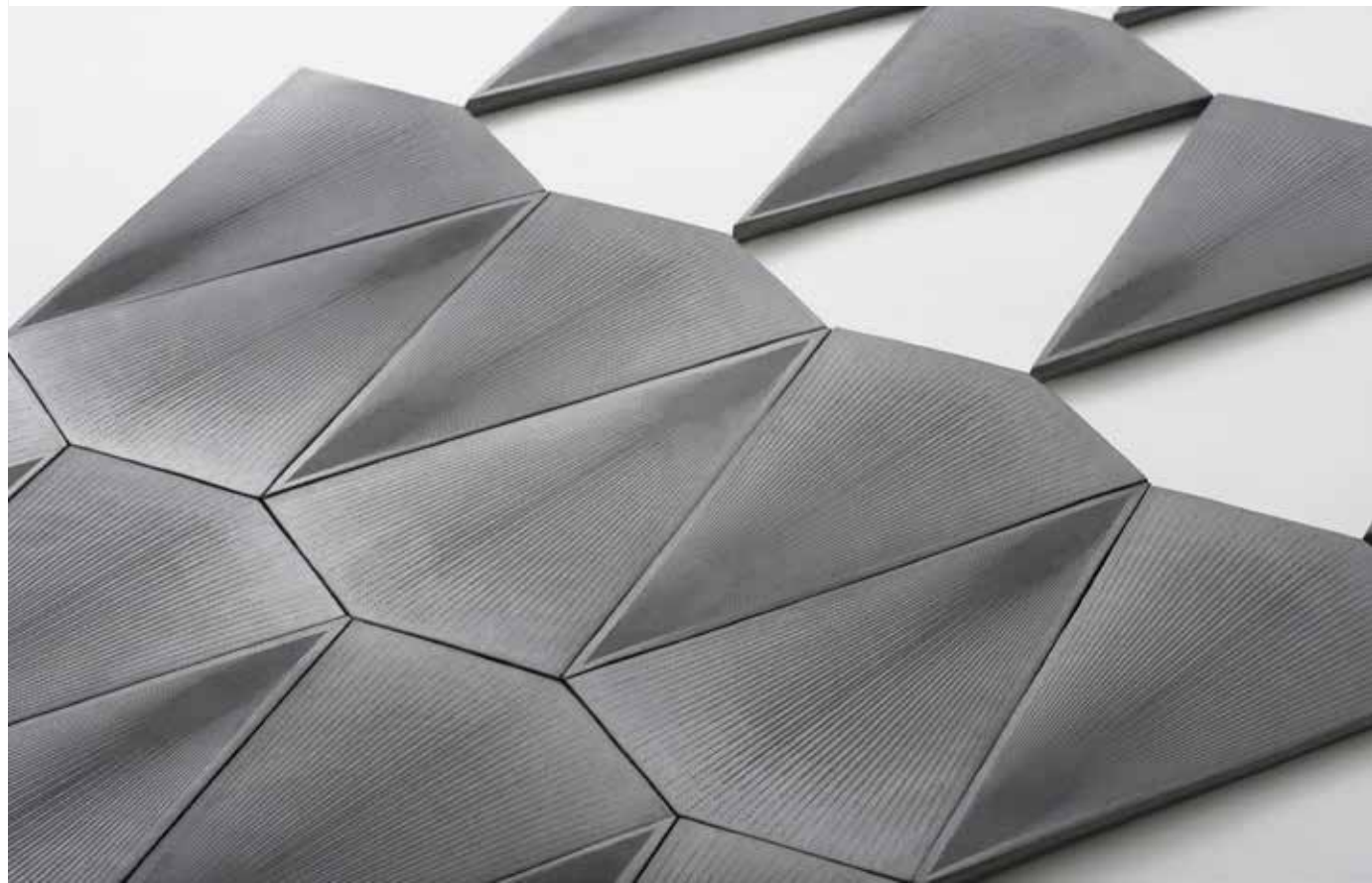
M_RKN_007_RC300_B



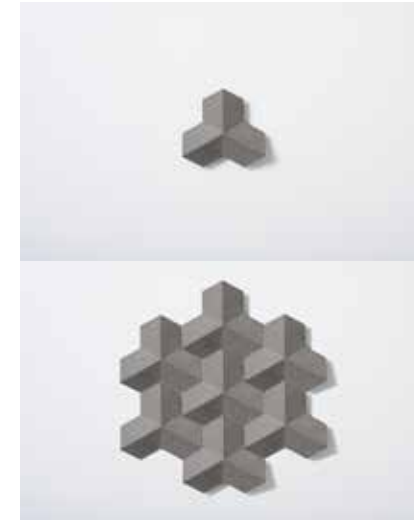
M_RKN_005_RD120



M_RKN_004_RD120



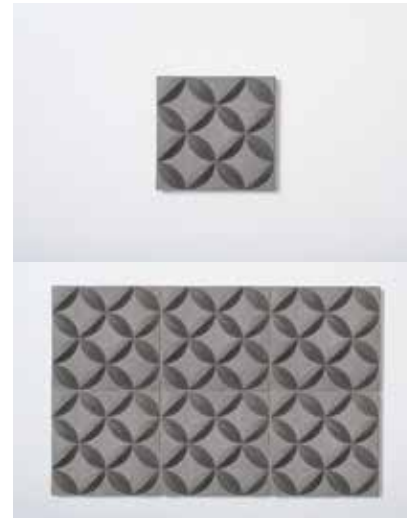
M_ASG_003



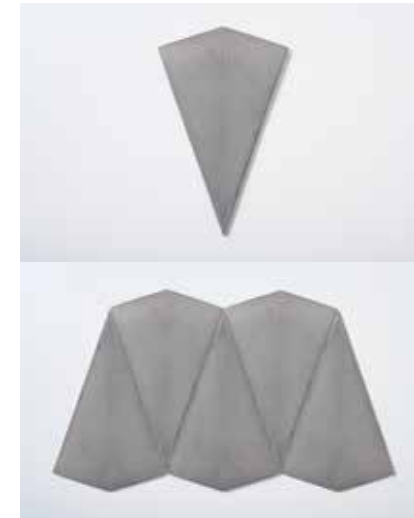
M_ASG_005



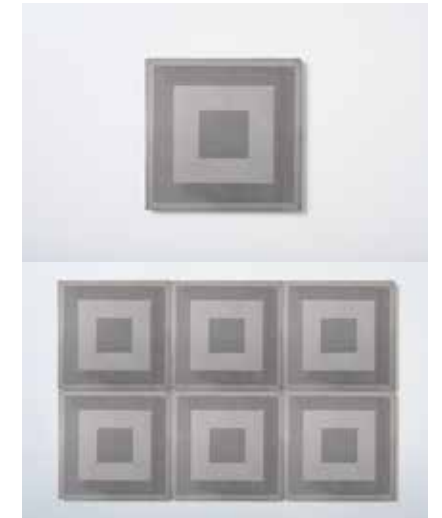
M_ASG_007



M_ASG_008



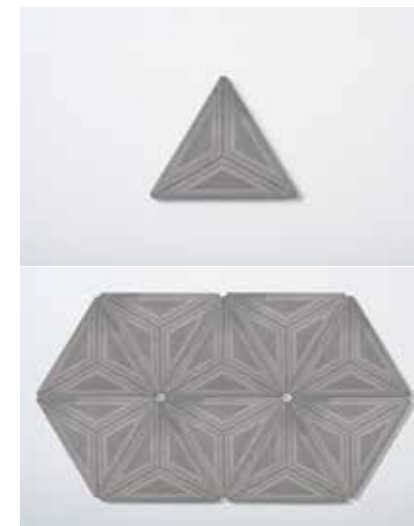
M_ASG_009



M_ASG_011



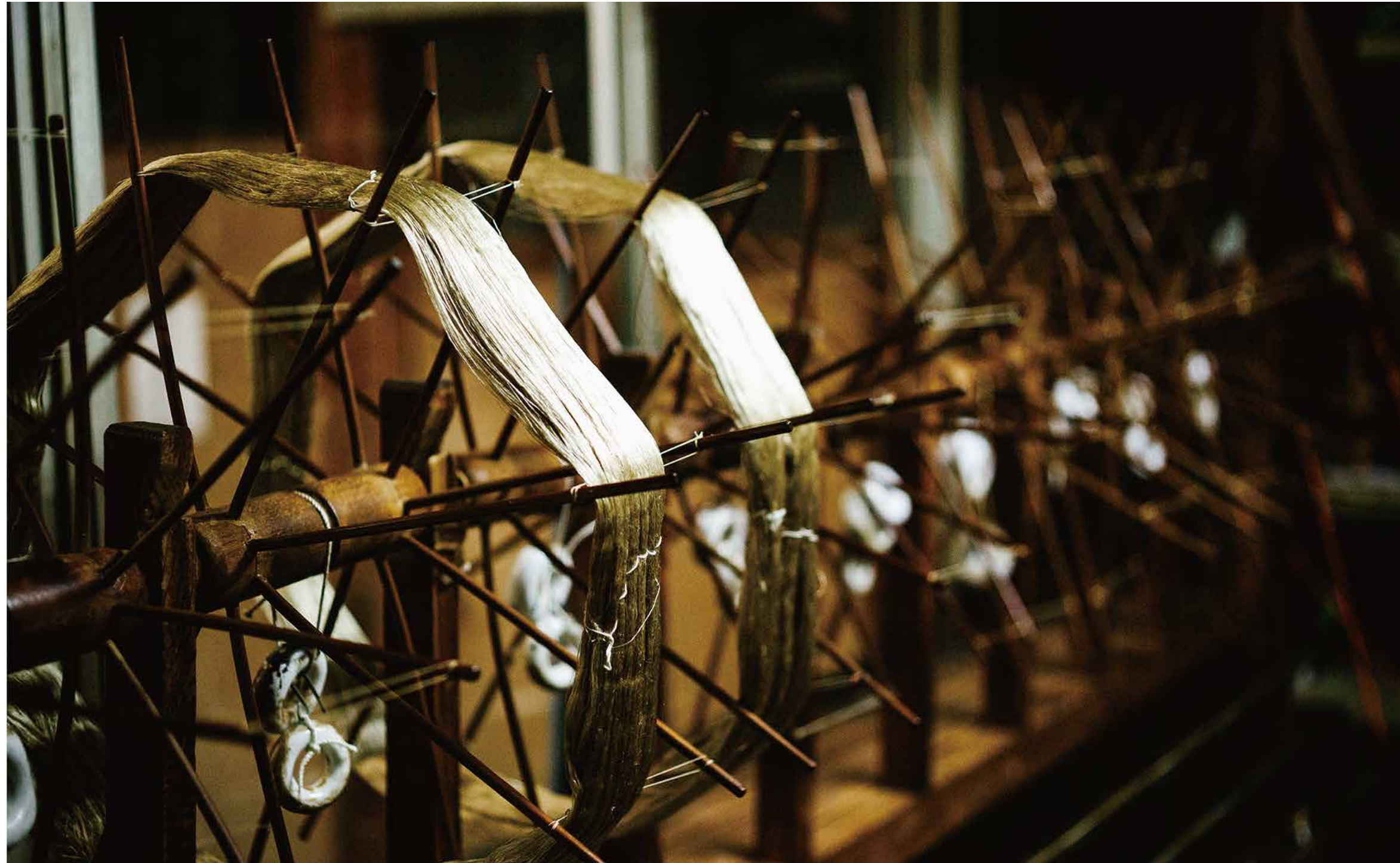
M_ASG_012



M_ASG_013



M_ASG_014



Materials & Techniques

Fabric

Cloth spun from innumerable materials also has various processing techniques.

Laser cut screen is a method of cutting various fabrics with a laser and bringing the fabric to life. The cutting screen is especially effective because it is made to order and you can freely choose the size, material, specifications, color, and design. You can create a space with dynamic and delicate beauty such as facade screens, light walls, and partitions.



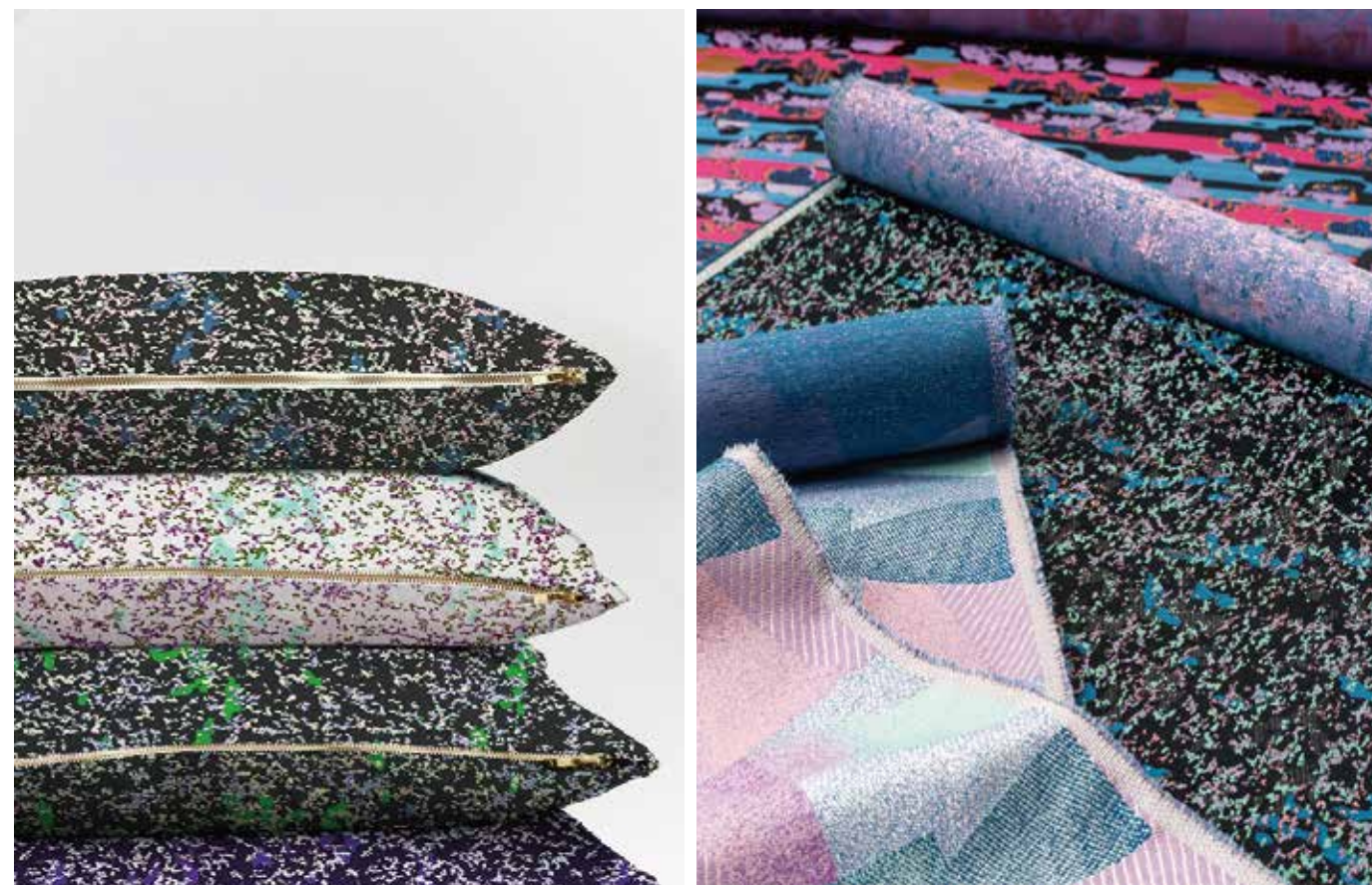
Uniqlo Rivoli, Paris/Designer : Céline Thibault & Jérôme Pellottiero



Uniqlo Rivoli, Paris/Designer : Céline Thibault & Jérôme Pellottiero



Design by Lily Alcaraz & Léa Berlier



Cushion Design by Studio Kaeran



Design by Design Guild Tokyo



Materials & Techniques

Gilding

Gold and silver leaf were used since ancient times in Japan to adorn temples, create outstanding objects, or embellish rolling scroll papers. Extremely thin, soft and with great luster, the Japanese traditionally made gold leaf technique is recognized as intangible cultural heritage of the humanity by Unesco.



Photo by Hakuichi



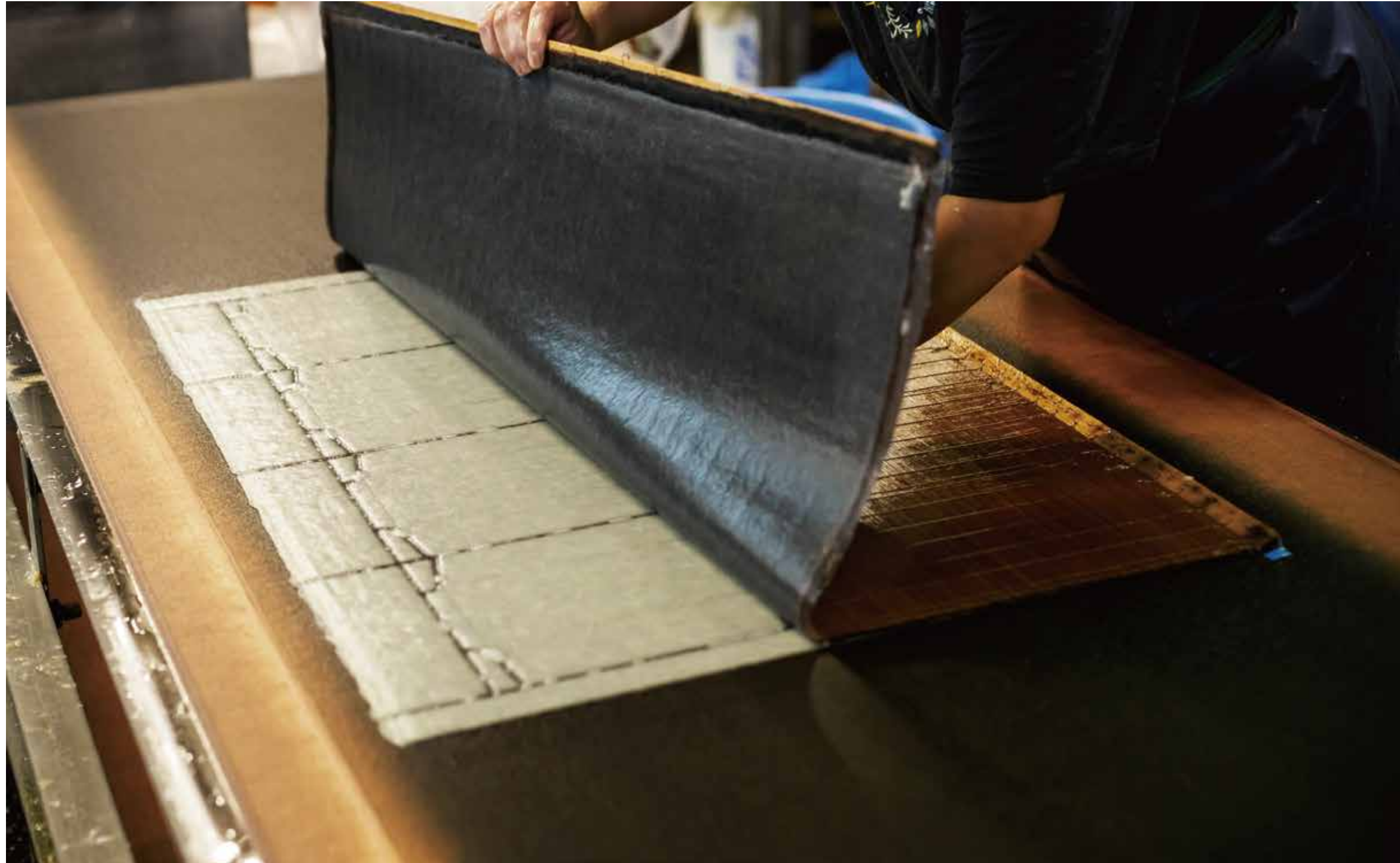
Photo by Hakuichi



Photo by Hakuichi



Photo by Hakuichi



Materials & Techniques

Washi paper

The characteristic of washi paper is that in comparison to western paper, the fibers are much longer.

It is known to have a unique texture that is tough even if it is thin. Washi is also used for the restoration of cultural properties all over the world, and has excellent durability, which is said to be over 1000 years. It also has a wide variety of beauty depending on the production area and technique. It has been used for craft materials as well as furniture. In recent years, the characteristics as a natural material and the beauty when lit are reviewed, and the demands for its interior use are increasing.



Photo by SUGIHARA

Photo by SUGIHARA



Photo by SUGIHARA



Photo by SUGIHARA



Photo by SUGIHARA

Photo by SUGIHARA



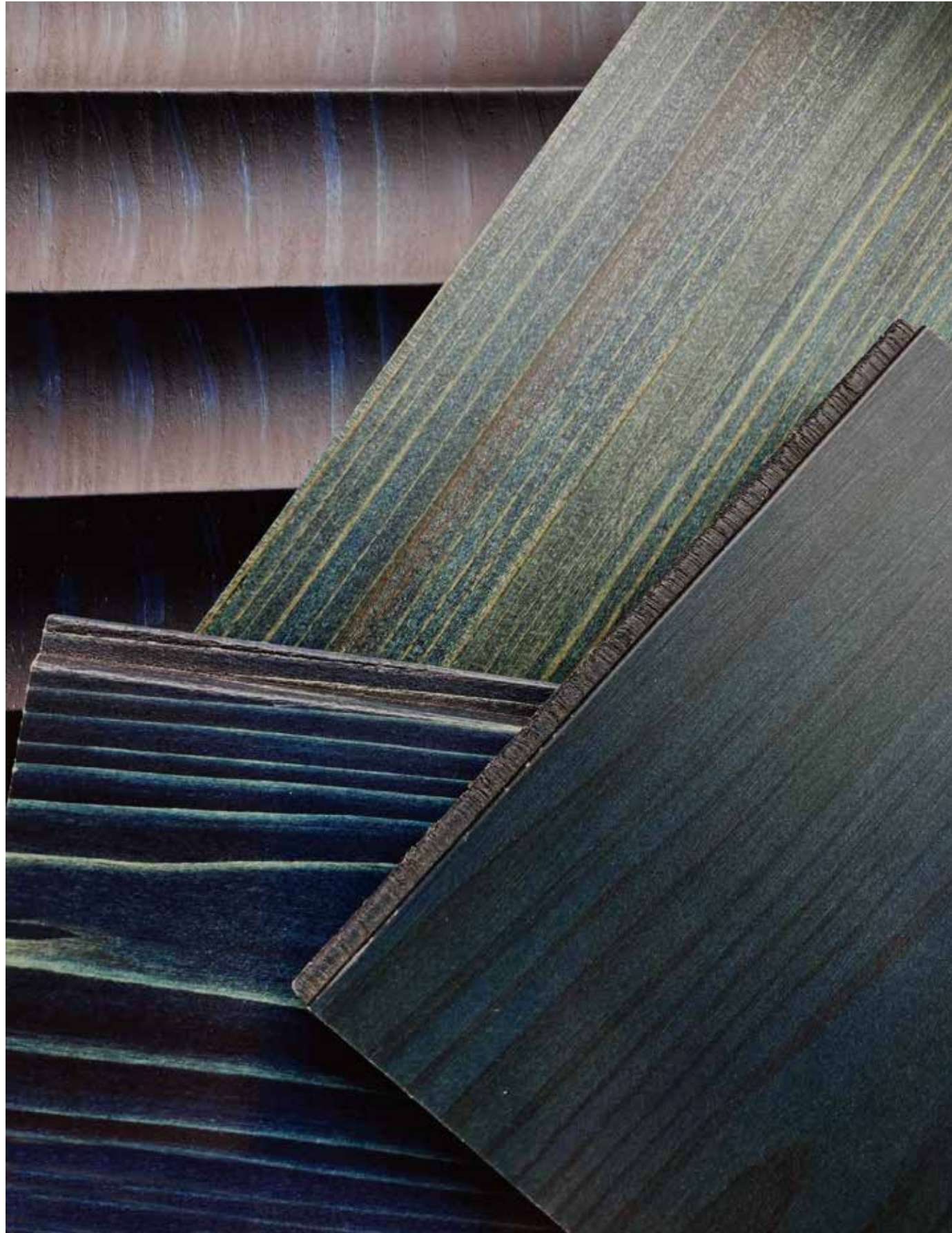
Materials & Techniques

Wood

Japanese woodworking crafts include sashimono, cabinetry, hikimono & kurimono, turnery, and magemono, bent wood.

These techniques have been developed in response to the natural characteristics of each region, such as Kyoto's Kyosashimono and Ishikawa's Yamanaka Hikimono. For example, Kyosashimono (a technique of assembling wooden parts by joinery) has its origins in the aristocratic culture of the Heian period. Then in the Muromachi period, craftsmen (Sashimono masters) developed this particular technique along with the establishment of the tea ceremony culture. It features elegant and delicate work.









Materials & Techniques

Metalwork

Metalwork products were introduced as swords, halberds, mirrors, etc, from mainland China and the Korean Peninsula to Kyushu during the Yayoi period. Afterwards, it developed uniquely to Japan, and used for dotaku, ritual vessels, and bronze mirrors.

In the Asuka period, when Buddhism was introduced, the production of metal crafts became very popular. It has a wide variety of processing methods, coloring techniques, and durability not found in other natural materials, and can be used in a wide range of applications.





Blue



Green



Copper red



Copper pink



Brass pink



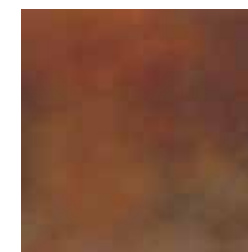
Copper brown



Yellow



Antique brass



Amber



Silver



Antique silver



Black



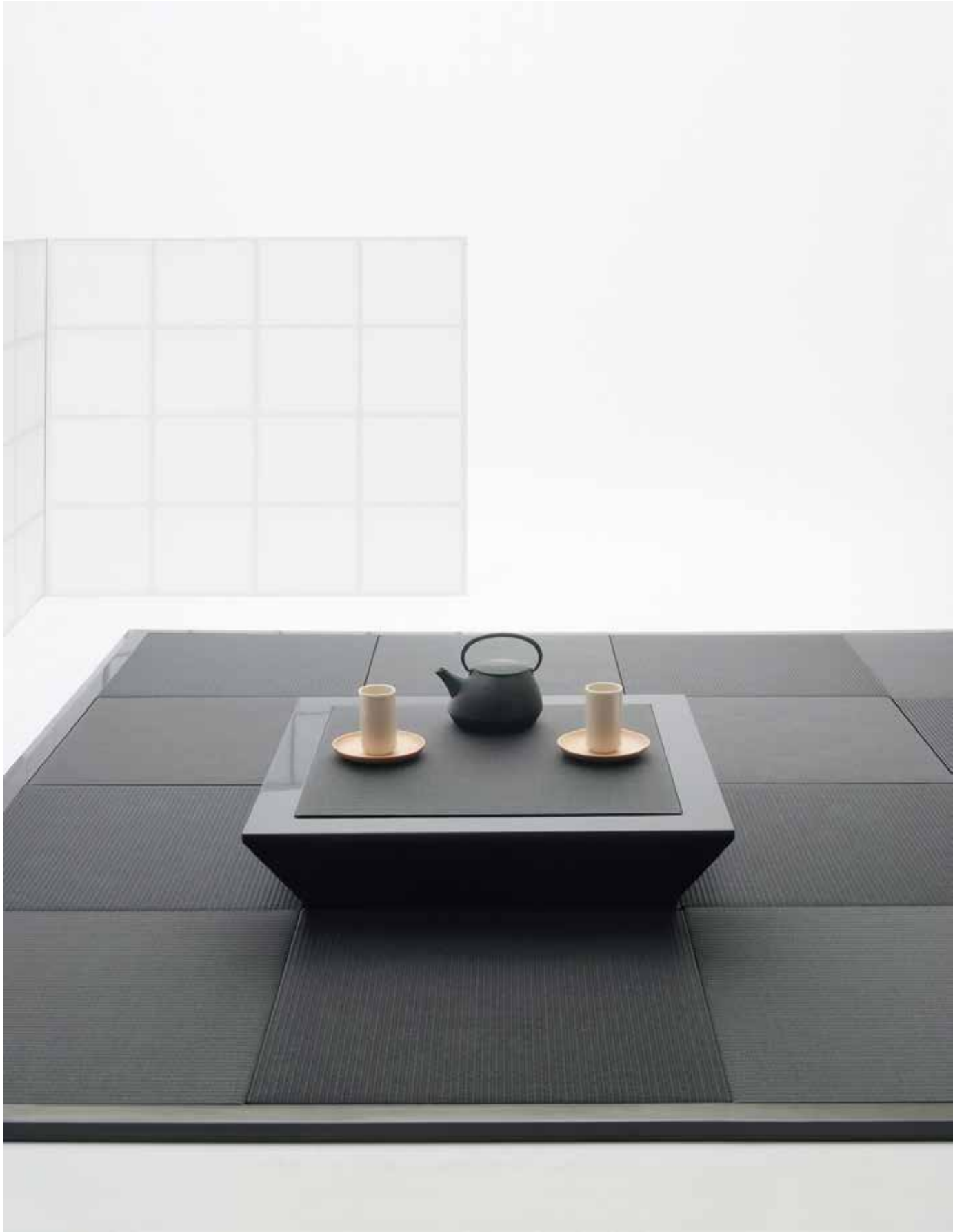
Materials & Techniques

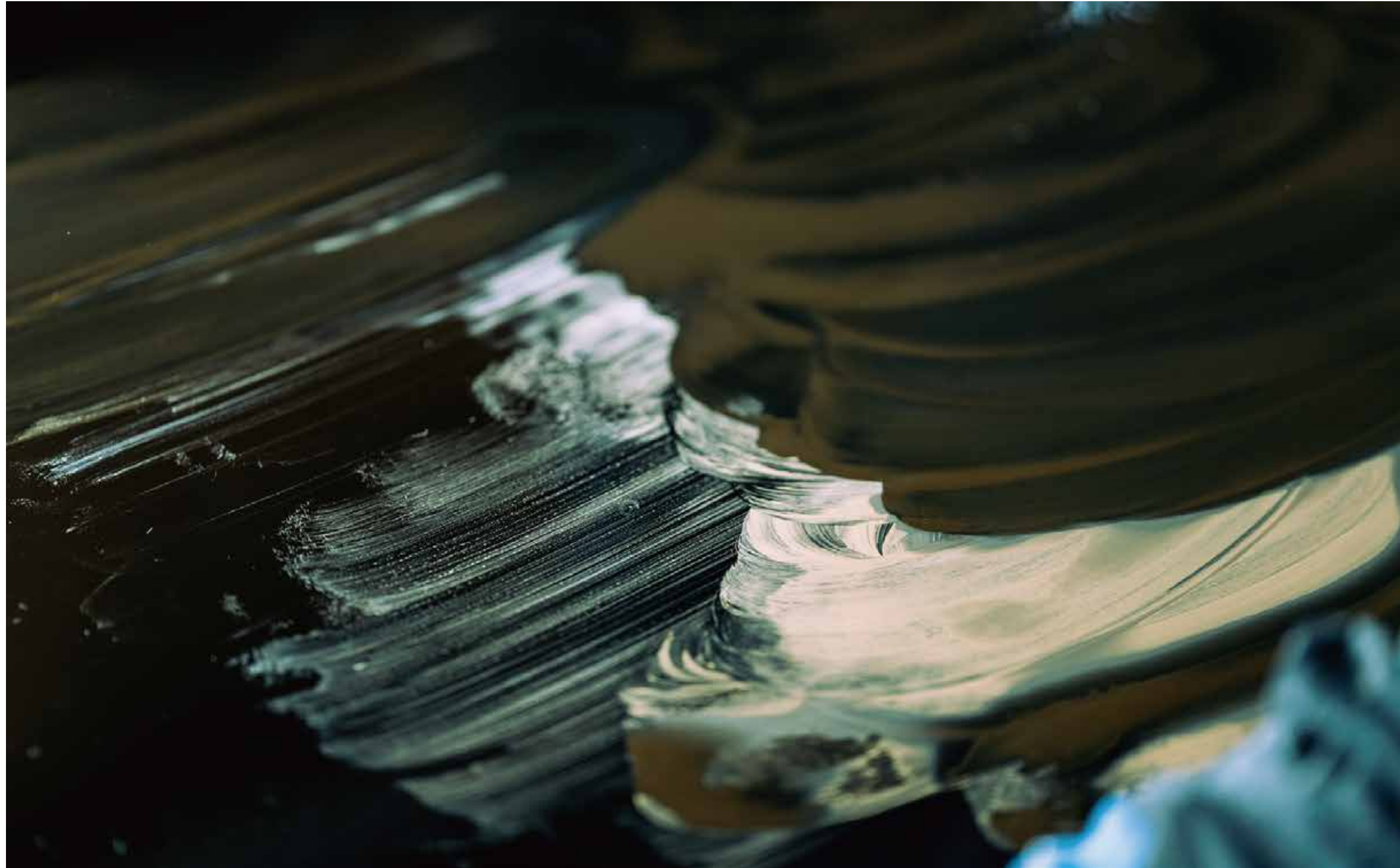
Tatami

Traditionally, to make tatami mat, the plate-shaped tatamidoko, core material, is covered by a rug-shaped tatamiomote, woven mat made of natural fiber "rush". A band-shaped cloth called tatamiberi is sewn on the edge to fasten and decorate the tatami mat. We propose tatami products using high-performance materials that have excellent design and can be used in various interior scenes.



Photo by YOKOYAMA TATAMI

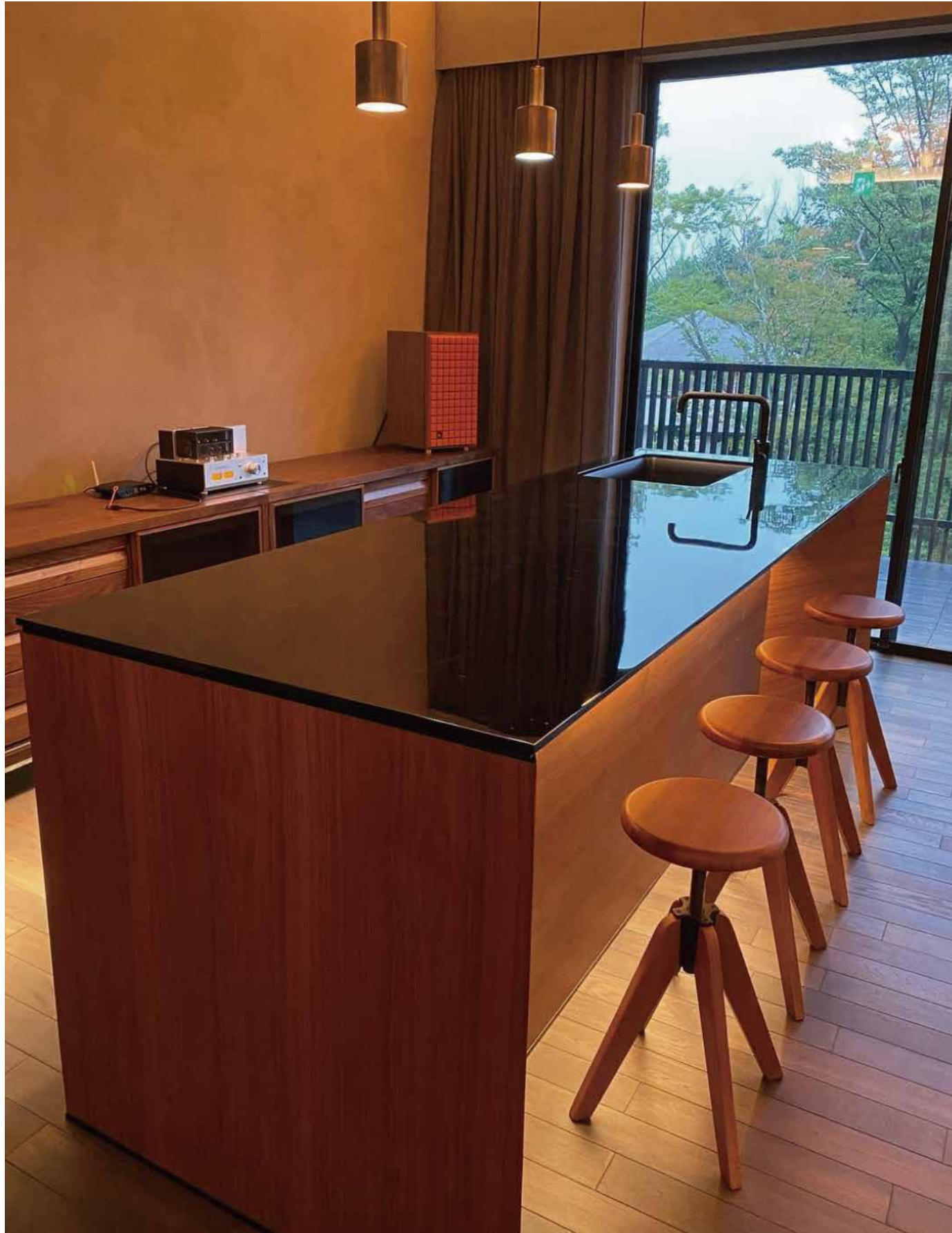




Materials & Techniques

Urushi lacquer

The use of lacquer in Japan began in the Jomon period and was favoured by the aristocratic class as a valuable item. Lacquer-coated tools are called lacquerware, and their beauty and toughness are evaluated as traditional crafts, and they are used for tableware and high-class furniture. Well-known such as Kyoto lacquerware and Wajima lacquerware, the unique texture that increases over time creates a luxurious impression.











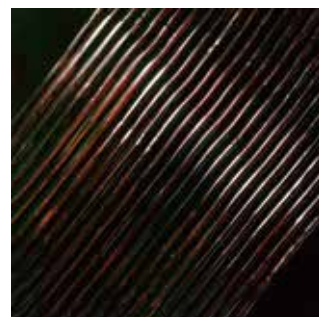
CL-1[A]



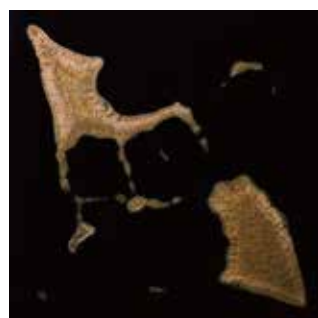
CL-23[A]



CL-24[A]



CL-27[A]



CO-1[B]



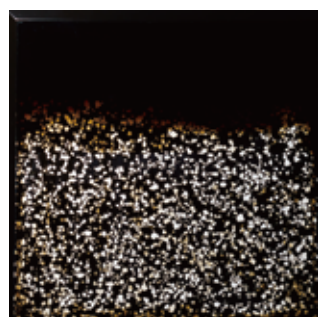
CO-9[C]



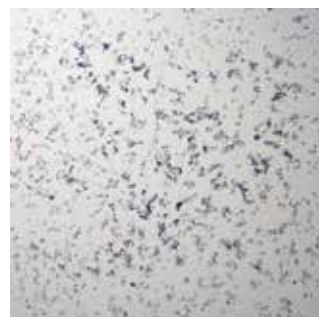
CO-10



CO-13[C]



I-2[C]



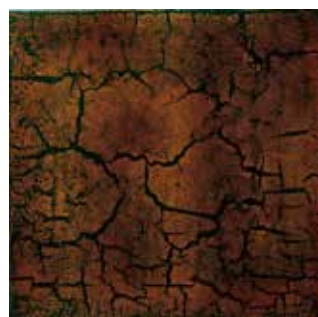
I-11



I-18[C]



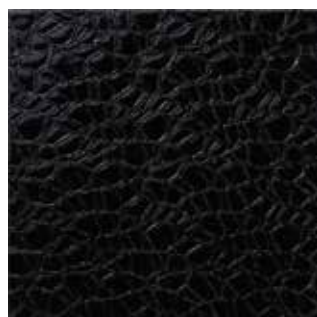
E-7[B]



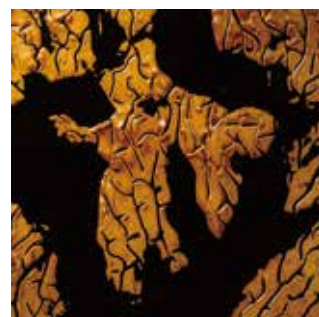
E-12



E-14[C]



E-18



E-22[B]

 HIYOSHIYA | INTERIOR

CONTACT

PARIS Office / Showroom

332 rue Saint Honoré 75001 Paris

MOBILE +33 (0)6-22-71-59-55

Mail : info@tci-lab.com

KYOTO Store / Workshop

546 Dodo-cho, Horikawa Teranouchi-higashi-iru, Kamigyo-ku, Kyoto

Phone +81-75-441-6644

Mail : info@wagasa.com

<https://wagasa.com/en>

KYOTO Nishijin Office / HIYOSHIYA Craft-lab

203 Tateyashiro-kitahancho, Kamigyo-ku, Kyoto

Phone +81-75-432-8751

TOKYO Office / Showroom

4F Kimoto Bldg. 2-18-17 Kojima Taito-ku, Tokyo

Phone +81-70-5668-8566

Please do not hesitate to contact us if you need any further information,thanks.

若您對我們的 Hiyoshiya interior (JDLI) 有任何的興趣, 請與我們聯繫洽談, 謝謝。

